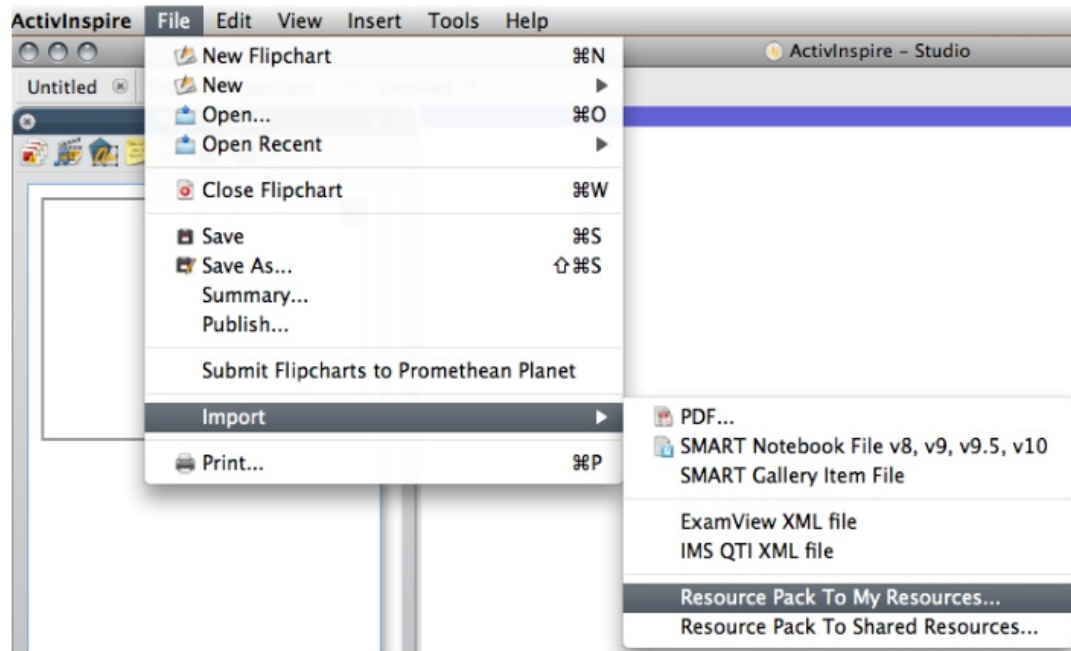
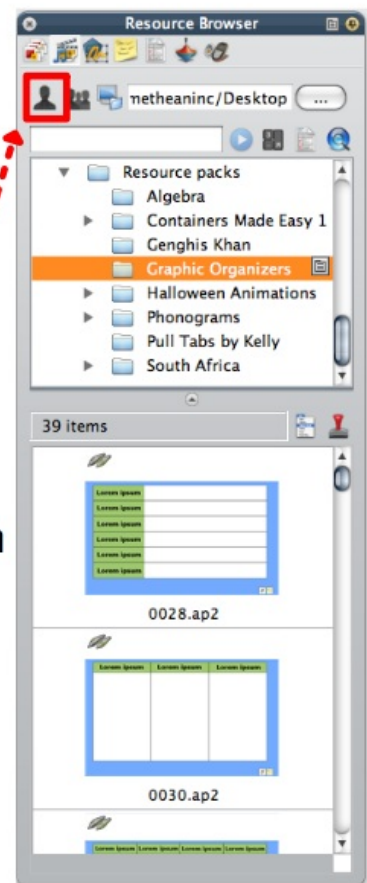
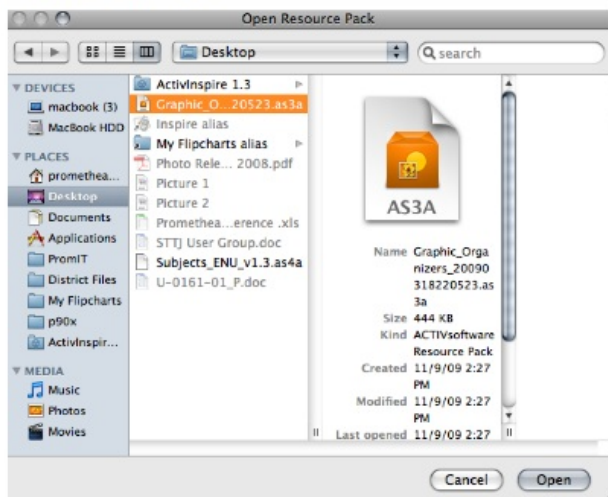


# 1. Open ActivInspire. Click on File-Import-Resource Pack to My Resources.



# 2. Navigate to the resource pack you downloaded. In this case, the resource pack is located on the Desktop. Select it and then click Open.



# 3. After the file has finished importing, open the Resource Browser, click on the My Resources tab, and scroll to the Resource Packs folder. Look for the name of the resource pack you installed!